

TESTPOINTS™

From the NBEO Board of Directors and Office Staff

ISSUE 102

WINTER 2011

The purpose of TESTPOINTS™ is to share with the various optometric communities the news, events, and changes that are happening at the National Board. Please send any comments or questions that you may have to info@optometry.org. Your submissions may be chosen for response in our Letters to the Editor Section.

Contents

<i>Dr. Larry Davis Elected President of the NBEO</i>	<i>1</i>
<i>Dr. Lyndon Wong Joins NBEO as Director of Clinical Skills Testing</i>	<i>2</i>
<i>NBEO Part I ABS Multiple Response Items</i>	<i>3</i>
<i>Why All the Fuss about Item Piracy? Life Cycle of Exam Items / Cases</i>	<i>4</i>
<i>NBEO-Administered Online State Law Exams (OSLEs)</i>	<i>5</i>
<i>Targeted? Non-Targeted? Pass Rates? What's in a Word?</i>	<i>7</i>
<i>Letter to the Editor: Is the Timing of 1-Site CSE Fair to All Candidates?....</i>	<i>9</i>
<i>Image Depository / Item Writer Reminder</i>	<i>9</i>
<i>Did You Know ... ???</i>	<i>10</i>
<i>Additional Information</i>	<i>11</i>

Dr. Larry Davis Elected President of the NBEO

Dr. Larry J. Davis was elected as President of the National Board of Examiners in Optometry at the December 2010 Board of Directors meeting. Dr. Davis joined the Board in 2006 and has served as its vice president and secretary/treasurer. He was appointed Dean of the College of Optometry at the University of Missouri - St. Louis in July 2002 following 27 months of service as Interim Dean. He is also an Associate Professor at the College.

Under Dr. Davis's leadership the faculty revised the faculty governance, college strategic plan, and outcomes measures for the teaching, research, patient care, and service activities of the program. By fostering support from the campus administration, he advanced improvements to the college facilities including an expanded Student Center, updates to classrooms, the dispensary, and clinic entryways, and improved signage in order to increase the awareness for the availability of clinical services within the campus Center for Eye Care.



Dr. Larry Davis Elected NBEO President (continued)

College endowment funds directed toward scholarships, faculty support, and clinical services doubled during the period between July 2000 and July 2006 and now total more than \$1 million.

After receiving a Doctor of Optometry from Indiana University in 1987, Dr. Davis went on to complete a residency with an emphasis in cornea and contact lenses at the University of Missouri - St. Louis School of Optometry. Prior to joining the faculty at UMSL in 1993, he held a full-time faculty appointment in the Department of Ophthalmology at the St. Louis University School of Medicine where he also served as Director of the Contact Lens Service.

Dr. Davis is a Fellow of the American Academy of Optometry and Diplomate of the Cornea and Contact Lens Section. He has served on the Scientific Program Committee of the Academy. Dr. Davis is President of the Board of Directors of both the National Board of Examiners in Optometry (NBEO) and the Heart of America Contact Lens Society (HOACLS). He served as President of the Association of Schools and Colleges of Optometry (ASCO) and the St. Louis Optometric Society. He completed the inaugural yearlong University of Missouri System Leadership Development Program for Department Chairs and was one of three academic leaders selected by ASCO to participate in a yearlong leadership program for administrators of health professions training programs. In 1999 the students at UM - St. Louis School of Optometry selected him as Outstanding Optometric Educator of the Year. The membership of the St. Louis Optometric Society selected Dr. Davis as Optometrist of the Year in 1994 and Distinguished Optometrist in 2002.

Dr. Davis's areas of academic specialization are cornea, contact lenses, and anterior segment ocular disease with special emphasis in refractive management of the diseased and/or injured eye. He served as principal investigator of the U.M. - St. Louis participating clinic of the Collaborative Longitudinal Evaluation of Keratoconus (CLEK) study which served to define the natural history of keratoconus in a cross-sectional sample of patients with moderate to severe disease. He has authored or co-authored more than 50 scientific papers, book chapters, and abstracts.

Dr. Davis is married to Janice K. Davis who is a teacher. They have one daughter.

*Lyndon Wong, O.D., F.A.A.O., F.C.O.V.D. Joins NBEO
as Director of Clinical Skills Testing*

The National Board of Examiners in Optometry (NBEO) is pleased to announce the appointment of Dr. Lyndon Wong as Director of Clinical Skills Testing for the National Center of Clinical Testing in Optometry (NCCTO) in Charlotte, North Carolina. Dr. Wong received a BS degree in Biology from Rutgers, The State University of New Jersey. He earned the Doctor of Optometry degree from the State University of New York (SUNY) - College of Optometry, in 1993. The following year, he completed a Residency in Vision Therapy at SUNY. After completing his residency, he joined the SUNY College of Optometry clinical faculty.



Currently, Dr. Wong is an Associate Clinical Professor and serves as the Chief of Primary Care Services. He has provided care in the Primary Care, Glaucoma, Vision Therapy, and Pediatrics Clinics at The University Eye Center. Moreover, he has been the instructor of the laboratory sections of the Vision Therapy and Visual Field courses.

Dr. Wong is a Fellow of the American Academy of Optometry and the College of Optometrists in Vision Development. He has authored a chapter in a reference text as well as multiple journal publications and conference presentations.

Additionally, he has lectured extensively on a local, national, and international level. Dr. Wong will bring extensive managerial and supervisory expertise to the NBEO as he begins to direct the development of the new one-site clinical skills examination facility and prepares it for its inaugural testing day in August/September 2011.

Dr. Wong will assume his new position on March 1, 2011. As Director, Dr. Wong will be responsible for the overall development, implementation, equipping, administration, staffing, evaluation, and fiscal management of both the NCCTO and the Part III Clinical Skills Examinations. He also will serve as the primary liaison between the NBEO and the CSE Committee and Council and will direct the interactions among the groups as the CSE continues to evolve.

*Lyndon Wong, O.D., F.A.A.O., F.C.O.V.D. Joins NBEO
as Director of Clinical Skills Testing (continued)*

Dr. Lyndon Wong is married to Dr. Nancy Wong, a staff optometrist at the VA Hudson Valley Health Care facility in Montrose, New York. She has served many years on the NBEO Advanced Competence in Medical Optometry (ACMO) Development Committee. They have a seventh-grade daughter and a third-grade son.

The NBEO sincerely looks forward to partnering with Dr. Lyndon Wong as we endeavor to create a critically-needed, state-of-the-art clinical testing program and facility.

NBEO Part 1 ABS Multiple Response Items

As part of its continuous quality improvement process, the NBEO routinely considers how best to assess entry-level optometric competence. In addition, the recent investigation into exam security has highlighted the need to enhance the testing processes. As a result, the NBEO will be utilizing multiple response items on the Part I Applied Basic Science Examination starting in March 2011. Multiple response (MR) items require that a candidate select more than one option in an extended multiple choice format. In this item type, a candidate is presented with a question and list of options and is asked to select a specific number of options that apply. An example follows:

Which 3 of the following inhibit the synthesis of the bacterial cell wall? (Select 3)

- A) Clavulanic acid
- * B) Cephalixin
- C) Ciprofloxacin
- D) Erythromycin
- * E) Amoxicillin
- * F) Bacitracin

Why has the NBEO added MR items to the ABS exam at this time?

It recently has come to light that many candidates are encouraged to prepare for the ABS exam by rote memorization of “pearls” or “nuggets.” The MR item format facilitates testing more comprehensive knowledge. Multiple response item use will increase the validity of the assessment as this item type better reflects a candidate’s ability to integrate and synthesize the knowledge and information needed and used in optometric practice.

Have MR items replaced the current ABS items?

Multiple response items have been added to the existing Part I item format. Both single-option (traditional) multiple choice items and MR items will be included on future ABS exams. The items will be interspersed within all content areas and in all exam sessions. The examination length will remain the same at a total of 500 items.

How are the MR items developed?

The same rigorous process that is used to develop standard multiple choice NBEO items is being used to develop the multiple response items. Item writers from across the country who meet the stringent NBEO criteria are selected to author items based on item bank subject matter needs.

How is candidate performance scored on MR items?

As with standard multiple choice items, MR items are scored either right or wrong. There is no partial credit in the scoring of these items. Item stems will always inform candidates of the number of correct responses needed.

How many options will ABS items have?

Multiple response items will offer as many as seven options. The traditional, single-option, multiple choice items will continue to provide three to five options.

Why All the Fuss about Item Piracy? The Complex Life Cycles of NBEO Examination Items and Cases

Since April 2010, significant portions of the NBEO's time and resources have been occupied by the ongoing March 2010 Part I ABS piracy scheme investigation. As details were uncovered, it became apparent that item piracy also took place during the March 2009 Part I ABS exam, at the same school. Based on student contributions in the two distinct "item dumps," specific NBEO items from both Part I exams could be identified. As a result, the National Board found it necessary to mark the pirated Part I items (questions/answers) in the NBEO database as "exposed." These exposed items can no longer be used in NBEO exams.

The cost of item development is staggering. The cost/value of a single item is intertwined with the expenses involved in developing the associated examinations; items/cases are not administered in isolation but they are used within the context of the entire collection of items and cases. To fully understand all of the "fuss," the many steps the NBEO takes to produce a single written examination must be considered. Though a multitude of additional steps are involved in the production of an item or a case, following is a synopsis of the *major* developmental milestones:

NBEO Exam Development Cycle: (approximately 10 months, start to finish)

- Potential item & case authors are identified.
- Staff presents an Authoring Workshop Webinar for all Item/Case Writers.
- Authors submit Part I items or Part II cases (which consist of a scenario, 1+ images, and 6+ items).
- Staff enters the submitted data, and edits for style and format consistency.
- Item/cases are reviewed, revised, and approved by Development Committees. There are 5 committees – ABS Disease, ABS Refractive, PAM Disease, PAM Refractive, and ACMO.
- A second round of staff edits is performed.
- Final case/item selections go to Examination Councils for review. The 3 Councils are ABS (representatives from Disease and Refractive Committees), PAM (members from Disease and Refractive), and ACMO.
- Final revisions are made by staff and the exam goes to the printer (approximately 2 months before test day).
- The printer's proof is reviewed, amended if necessary, and approved.
- After printing, each exam booklet is checked for printing errors, missing pages, etc. Booklets are bar-coded, sealed, bundled, counted, shrink-wrapped, and shipped to test sites.
- Following exam administration, booklets are returned to the NBEO and are checked in (bar-code is read) and weighed to ensure that pages are not missing.
- Answer sheets are scanned and candidates' critiques of individual items/cases are entered into the database.
- Once initial scoring is complete, Examination Councils perform a quality review, including consideration of every critique, to determine if any items are flawed (ambiguous, more than one correct answer, mis-keyed, etc.). Item statistics are reviewed. Flawed items are removed from scoring.
- Following Council decisions, final scores are determined.
- The Board of Directors' Exam Committee reviews the results and approves score release.

The National Board incurs considerable expenses at every stage of the process. For example, the NBEO underwrites the cost of travel to and from committee and council meetings as well as lodging and dining costs; there is a minimum of three meetings for each Part. In addition, the subject matter experts receive an honorarium as a token of appreciation for the time taken from their professional and personal lives. In between meetings, NBEO staff spends substantial time in the preparation of items/cases for use in exams. Office supplies, professional printing, and shipping costs mount as items and cases make their way through the multifaceted exam development steps.

Every item or case that is administered on an NBEO examination is extensively and repeatedly considered, reviewed, discussed, and edited before it is sent to print. The theft of even a single exam item or part of a case is a significant loss to the National Board, and by extension, to the profession, to state boards, and toward the protection of the public.

Item Writers, Exam Development Committee members, and Exam Development Council members are essential to the National Board. The NBEO greatly appreciates the time, talent, and mental energy that these dedicated individuals devote to the profession through the exam development process. Without their invaluable contributions, there would be no NBEO examinations.

NBEO-Administered Online State Law Exams (OSLEs)

For many years, the National Board assisted some states with the administration of their state optometry jurisprudence exams by holding special law exam sessions in conjunction with the Part III section of the PAM exam, for all candidates interested in acquiring licenses in those states. Due to implementation of the 2009 NBEO Exam Restructure, it was no longer possible for the National Board to administer these traditional paper law exams for state boards. The NBEO **Online State Law Exam (OSLE)** program was developed to support states that opted to initiate or continue NBEO administration of their law exams.

How does the OSLE system work?

Candidates register for an online exam on the NBEO website and then test at their convenience, on any computer of their choice. State optometry laws and statutes are provided on the NBEO website for candidates' perusal as they take the exams. States' use of OSLEs provides a logical incentive for license applicants to carefully review these laws as they search for answers to the exam questions.

Do state boards determine their law exam characteristics?

State boards create the questions on their law exams based on their specific state optometry laws and statutes. The OSLE system allows states to determine the number of items to be included in their law exams. A state may choose (or not choose) random presentation of the questions within each exam, as well as random presentation of answers within each question. In addition, a state can provide as many extra items as its board wishes to produce while maintaining a static number of questions on each exam. For example, a state can designate exam inclusion of 25 items out of a possible pool of 50 questions on file in the OSLE database for that state. Because of the availability of surplus items, a diverse assortment of questions will be pulled into each exam. However, a state board can also identify certain items as core questions that cover the basic, most important state optometry law issues. These items will present on all of that state's exams. Questions and answers incorporated into a state board's OSLE can be added, deleted, or updated at any time simply by emailing the exam alterations to the NBEO office. Changes will be effected within a day or two. State boards determine whether their online exams will be available to candidates all the time or only during specific time intervals. State boards dictate all discretionary parameters of their state law exams.

How does a candidate actually take an OSLE?

OSLEs are taken on the NBEO website. After registering, test takers may choose when they wish to take their exams. An entire, unique OSLE exam is instantly created when a candidate selects the START button. One question at a time presents on the computer screen. Candidates can jump ahead or return to completed or uncompleted questions to answer or review until they submit their exams for scoring, after which time item responses are permanent. Once a candidate clicks on START, an online exam must be completed within 2 weeks from the start time or until the exam deadline expires, whichever time option is chosen by any given state optometry board. If candidates take breaks during the exam or the computer times out, the exam resumes where it left off when the test taker returns to the NBEO website.

Are OSLEs easily shared among candidates?

The random presentation of questions and their answers, coupled with OSLE's ability to rotate surplus items in and out of a state's exams, results in a nearly infinite variety of unique exams. In addition, exam items can be modified at any time. This combination of OSLE features dramatically enhances exam security as it would require great diligence to capture and untangle the vast array of one-of-a-kind exams. Without doubt, candidates find it simpler to search the state laws for correct answers than to attempt to find them in any other manner.

How difficult are online state law exams?

State optometry boards establish the difficulty level of their law exams. However, these tests typically are not designed to be unnecessarily complex. Their main purpose is to encourage license applicants to study the state laws that will govern their professional behavior. If a state board chooses, the state optometry laws are available as a link on the OSLE page of the NBEO website and are intended to be consulted as OSLEs are taken so that correct responses can be identified among the answer choices. Since exposure to the text of laws and statutes is required in order to successfully answer the exam questions, a passing score indicates the accomplishment of the goal.

How have candidates reacted to the online law exams?

In addition to the capacity to generate online exams, score them, and report scores to state boards, OSLE allows candidates to post their comments as they conclude their exams. Candidate observations have led to several improvements in the online law exam process system. In addition, by far the majority of OSLE candidates have expressed very positive sentiments toward their jurisprudence experience:

- *“This is a great service. It saves driving time and headache. Thank you.”*
- *“Good format, easy to use interface, directions well explained. Overall, great job.”*
- *“No improvement needed. Self explanatory and easily used.”*
- *“I thought it was a very efficient method, I appreciated being able to skip and also view in one screen the question numbers which had and had not been answered.”*
- *“Sirs, I thought the exam was quite thorough, not to mention, strategic in its coverage and its format in helping the contestant to not only complete the exam but also to learn from it. Once again, good job, and thank you for the educational experience.”*
- *“The system was very user friendly.”*
- *“Every state should implement this form of law examination! It was simple and easy to use, and I didn’t have to travel all the way to the Board headquarters to take it. The OSLE system is fantastic! Great Online exam.”*
- *“I think the system is set up nicely as is. Easy to follow instructions and very convenient!”*

Can the OSLE program be used for anything beyond testing new licensees?

The online law exams are useful in the licensing of new optometry graduates and endorsement candidates, as well as for the administration of 1-hour continuing education courses for ODs already licensed in a state in which there exists an annual or biennial requirement for re-exposure to state optometry laws. The OSLE database can accommodate items created by state boards that include a scenario paragraph followed by a set of questions and answers.

What does it cost a state board to enroll in the OSLE program?

Inclusion in the OSLE program involves no cost to state boards of optometry. The cost to each candidate is only \$25 per OSLE event. A state needs only to email a set of questions and answers to the National Board office, with or without extra questions for item-rotation purposes. Within a few days, the items will be entered into the OEDIS database, state board approval of the entered items will be secured, and the new OSLE will be activated and available to candidates seeking licensure in that state. These online tests, taken on any computer in any location, provide state optometry boards with a simple, effective, inexpensive approach to encouraging optometry candidate exposure to state optometry laws, statutes, and regulations. Again, state boards are welcome to add, delete, or update their OSLE questions/answers at any time. Any state board interested in enrolling in OSLE can contact the NBEO at info@optometry.org.

Proctored OSLEs, anyone?

As NBEO develops the new one-site CSE facility in Charlotte, NC, the feasibility of offering proctored online state law exams is being considered. Candidates would be able to sit for their law exams in a proctored exam room during the same visit to Charlotte as when they take their Part III exams. A survey will soon be sent to state optometry boards to assess interest in this possibility. State boards wishing to offer this type of law exam scenario may choose to make their state laws and statutes available to candidates on the NBEO website for use during the proctored exam, or may elect not to provide the state laws if they prefer a classic, closed-book test.

** The NBEO appreciates all comments submitted by OSLE candidates, be they helpful suggestions that have led to beneficial tweaks to the OSLE system or positive commentary that has let us know the system is working well. We encourage our OSLE candidates to continue to provide us with feedback. The staffs of the various state boards of optometry are equally welcome to send us their observations regarding their use of the National Board’s Online State Law Exam process.*

Targeted? Non-Targeted? Pass Rates? What's in a Word?

Since NBEO offers event-based written examinations with two administrations per year, a special vocabulary has been developed to distinguish the occasions. A targeted administration refers to the exam that is taken by most members of a class cohort; it is usually the first opportunity for which they are eligible to sit for that Part. For example, March of the third professional year is the targeted administration of Part I Applied Basic Science (ABS). Thus, March 2011 is the targeted administration of Part I ABS for the class of 2012 and the vast majority of the candidates will be students from that class. The non-targeted administration is the second opportunity within the year to take a particular examination; the majority of candidates for the August 2011 Part I ABS (non-targeted) will be repeat candidates or those who were unable to sit for the March administration.

When referring to the pass rates for NBEO examinations, the tendency is to focus on the results of a specific administration. Pass rates and other exam statistics are posted after each exam administration on the NBEO website under "Scoring Information/Statistical Reports." After a targeted administration, the NBEO routinely reports student pass rates to the respective optometric institutions. In addition, at the end of each academic year, the NBEO reports the institutional ultimate pass rates for the members of the most recent graduating class.

Since the NBEO Parts I, II, & III examinations collectively provide a comprehensive audit of candidates' total knowledge of entry-level optometry, it is helpful to examine pass rate results for a cohort without reference to a particular exam administration. Figure 1 summarizes the overall pass rates for the individual Parts and TMOD for the class of 2010. These data are ultimate pass rates, so they include results from all exam attempts. For example, a total of 1358 of the 1386 students (97.9%) have passed Part I. The data table that accompanies the Figure contains the raw numbers of students who passed each Part. The 'fail' numbers include students who did not attempt the Part.

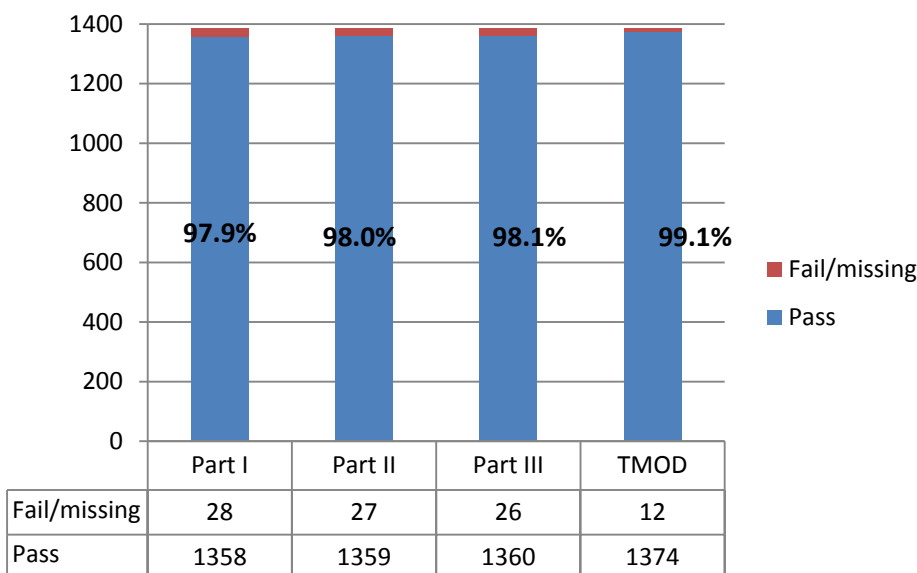


Figure 1. Class of 2010 Ultimate Pass Statistics on NBEO Part Examinations

While the ultimate pass rate for the class is important, the first-time pass rate is of interest because it relates to the general preparation and education level of the cohort. Figure 2 illustrates the first-time pass rates for each of the individual components of the NBEO exams. The data in Figures 1 and 2 are parallel and can be compared. For instance, Part I had the lowest first-time pass rate among the components (90.9%; Figure 2) and it also had the lowest ultimate pass rate (97.9%; Figure 1).

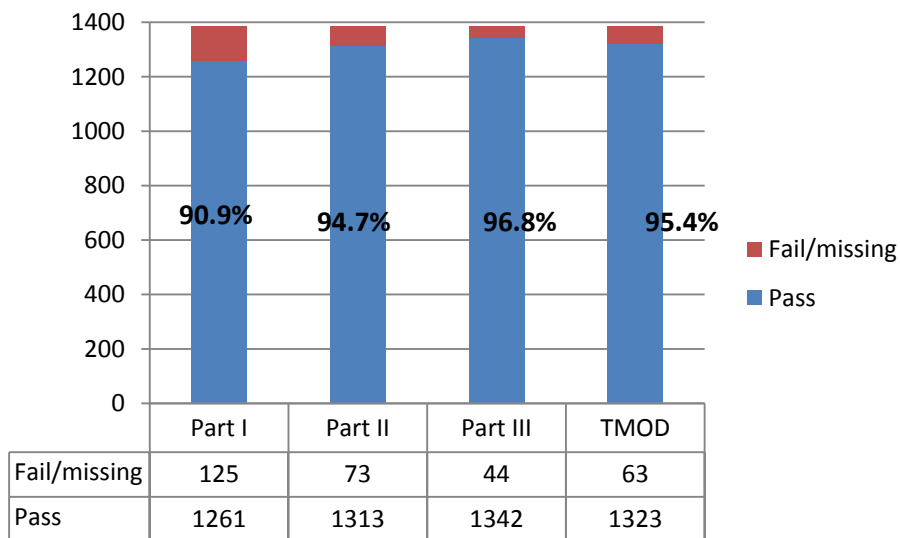


Figure 2. Class of 2010 First-Time Pass Statistics on NBE0 Part Examinations

Approximately 96% of the class of 2010 had passed all four aspects of the NBE0 exams (Parts I - III plus TMOD) as of October 2010 (Figure 3). This is considered their 'ultimate' pass rate. In contrast, the first-time pass rate for all four was 88.4% (Figure 4); this is the percentage of candidates who passed all four hurdles without needing any repeat examinations. Figure 4 also indicates that 2.2% of the 2010 class did not pass any (i.e., 'none') exams on their first attempt and another 2.2% only passed one exam.

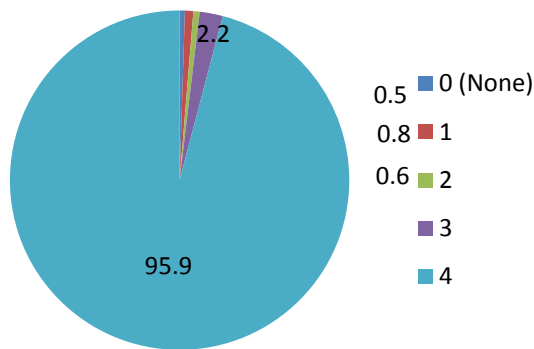


Figure 3. Percentages of Candidates by Overall Numbers of Passing Scores

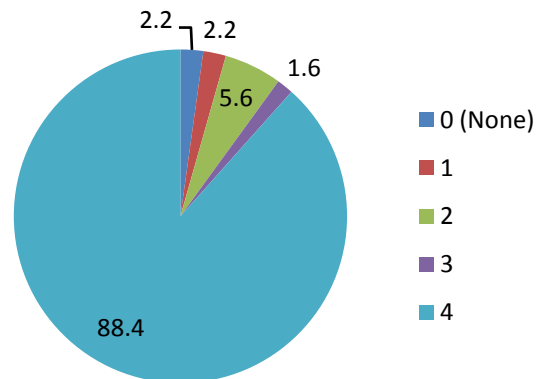


Figure 4. Percentages of Candidates by Numbers of First-Time Passing Scores

In evaluating the quality of its examinations, the NBE0 looks at pass rates for each administration and for the class cohort as a whole. These analyses assist the Board in confirming that the Parts are assessing entry-level competence and assure that they work together as a comprehensive, complete assessment system.

Letter to the Editor:

Is the Timing of One-Site CSE Fair to All 4th-Year Candidates?

Question: In the current format, CSE is given once a year in the Spring, so all candidates are at the same point in their education. In the one-site format, candidates will be taking CSE at different times throughout their 4th professional year, so they will have different levels of clinical experience. Is it fair for the NBEO to compare candidates who are not at the same level?

Answer: CSE, as well as the other NBEO examinations, are designed to assess MINIMUM, ENTRY-LEVEL competence necessary to enter the practice of optometry and to protect the public. All NBEO exams are criterion-referenced assessments, rather than norm-referenced, which means that the pass-fail scores are based on a specific standard rather than the comparative performance of the candidates taking the test. It is reasonable to expect that candidates from accredited institutions will learn far more than what is evaluated on the NBEO exams.

Over the years, some optometric educators have argued that CSE is administered TOO LATE in a candidate's education. This is because CSE is a highly structured, procedural assessment. As students accumulate more patient-care experience during their clinical rotations, they learn to develop and finesse their own clinical 'style.' This can be a significant disadvantage in a procedural exam that requires candidates to perform skills in a precise, prescriptive, step-by-step manner.

When CSE switches to a one-site configuration, candidates will be able to select a CSE test date that is comfortable and convenient for them. A candidate who prefers to wait until April to gain additional clinical experience will have that option. A major advantage to testing earlier in the 4th year is the ability to schedule a retest prior to graduation, if necessary. Under the current format, candidates who do not pass CSE in April must wait until August's end to retest.

Standard Setting Definitions

Norm-referenced: The cut score for this type of test depends on the scores of everyone taking the exam. Students compete against each other on this type of evaluation, so it is sometimes called 'grading on a curve.' This method is appropriate for allocating scarce resources, such as scholarships or jobs.

Criterion-referenced: This method is also called 'domain-referenced' because in this type of test, a candidate has to demonstrate knowledge in the 'domain' (i.e., field of optometric knowledge). In this type of testing, the cut score is determined by the number of test items needed to demonstrate minimum competence. This method is appropriate for licensure and professional certification examinations.

Image Depository / Item Writer Reminder

The NBEO has great interest in receiving your digital ocular images for use in our PAM and ACMO examinations. We can use your high-quality images of **normal** eyes, corneas, retinas, lenses, conjunctivas, and patients wearing spectacles or contact lenses or images of **common or unusual eye disorders**. We particularly need **paired images OD, OS**.

In addition, NBEO is always seeking assistance from item writers and case authors. If this type of service to the optometric profession appeals to you, or if you have extra images to share, please email the NBEO at info@optometry.org and we will contact you regarding your interest in contributing to NBEO exam development.

Did You Know ... ???

- ... online registration for the new One-Site Part III CSE at the NCCTO (National Center of Clinical Testing in Optometry) in Charlotte, NC will open on the NBEO website on **February 14, 2011**? The targeted One-Site CSE will be offered from **September 6, 2011 to April 30, 2012**. Candidates will be able to choose a test date compatible with their schedules and clinical development. To procure a desirable One-Site CSE date, it is recommended that candidates sign up early. Additional information regarding the one-site registration process will be posted on the NBEO website as details emerge. Please check back frequently!
- ... it is suggested that 2-3 weeks prior to any NBEO exam administration, all candidates click on **TEST DAY**, and then **INSTRUCTION TO CANDIDATES** to review a wealth of information helpful to all National Board exam takers? For example, included in this link is a description of the **identity documentation** that is required for access to the test site.
- ... a **confirmatory notice of exam registration is NOT required during check-in at the testing facility**? In the past, verification forms were sent to candidates, but this is no longer the case. However, this printable form can be accessed on the NBEO website 2-3 weeks prior to any exam by selecting **EXAM INFORMATION**, and then **EXAM VERIFICATION**. In addition, candidates *should* receive an email from the National Board office shortly following a successful registration for any exam. This email confirms that the exam fee was paid. However, many emails are returned as “undeliverable.” If the registration confirmation email is not received, a candidate can find this information under **REGISTRATION**, and then **REGISTRATION REVIEW**.
- ... prior to score release, all written NBEO exam answer sheets are subjected to analysis by a leading data forensics service in order to detect extremely unlikely response patterns that suggest cheating (e.g., answer copying or other collusion)? Answer sheets flagged by this analysis are subjected to further scrutiny. If there is sufficient statistical evidence to support a charge of cheating, scores will be temporarily withheld and ultimately may be cancelled following the conclusion of due process procedures.
- ... **candidates may no longer bring calculators to any NBEO exam**? Prior to the start of Part I ABS testing, exam proctors will distribute a disposable, *user-friendly* calculator to each test taker. These devices are **simple to use**, provide all math functions needed on Part I, and are the only calculators that will be permitted in the exam room. Further information is posted on the NBEO website under **TEST DAY**, and then **ELECTRONIC MATERIALS**.
- ... the presence of cell phones in exam rooms on test days has become a controversial topic? Because many of these devices now also function as cameras, critical test security concerns have surfaced. Cheating via texting during examinations has become all too commonplace. Therefore, **NBEO policy now dictates that cell phones no longer are permitted in exam rooms**. Test takers found to possess phones during exams may suffer serious, adverse consequences in regard to their test scores. All candidates are advised to read and follow the cell phone policy described on the NBEO website under **TEST DAY**, and then **ELECTRONIC MATERIALS**.
- ... that sometimes, calls and emails are received in the NBEO office from candidates needing to know if National Board Parts I, II, and III can be taken out of sequential order? Each exam has its own eligibility requirements, but as long as these have been met, Part order is flexible. Eligibility issues, including those specific for *sponsored candidates*, may be viewed on the NBEO website by clicking **EXAM INFORMATION**, and then **ELIGIBILITY**.
- ... the NBEO office receives a number of inquiries about the expiration of exam scores? Once NBEO exams are taken, scored, and the scores are accepted and distributed to candidates and state boards, these scores are permanent. **NBEO SCORES NEVER EXPIRE!** However, always check with your state board to determine its specific requirements regarding National Board scores. To initiate the score reporting process, please click on **SCORING INFORMATION**, and then choose either **REQUEST SCORE REPORT ONLINE** (to access the appropriate form) or **REQUESTING A SCORE REPORT** (to read all about it)!

Additional Information

NBEO Board of Directors

Larry J. Davis, O.D.
President
St. Charles, Missouri

Jill R. Martinson-Redekopp, O.D.
Member
Minot, North Dakota

Nancy Peterson-Klein, O.D.
Vice-President
Mecosta, Michigan

William B. Rafferty, O.D.
Member
Winston-Salem, North Carolina

Alan J. King, O.D.
Secretary-Treasurer
Dickinson, North Dakota

Melvin D. Shipp, O.D., M.P.H., Dr.P.H.
Member
Columbus, Ohio

Dennis D. Long, Ph.D., A.C.S.W.
Public Member
Waxhaw, North Carolina

Christina M. Sorenson, O.D.
Member
Scottsdale, Arizona

NBEO Executive Director

Jack E. Terry, O.D., Ph.D.
Charlotte, North Carolina

To **subscribe** or **unsubscribe** from **TESTPOINTS™**, please send an email to: info@optometry.org asking to subscribe or unsubscribe.

Next NBEO Exam

Part I ABS Exam
4 Sessions, 500 Items
March 15 - 16, 2011

ACMO registration is now open. Timely registration will ensure placement at the Pearson VUE Test Center of your choice. The expanded eligibility requirements can be found on the NBEO website.

<u>Exam</u>	<u>Test Date</u>	<u>Registration Deadline</u>	<u>Extended Registration Deadline</u>
Part I (ABS)	March 15 - 16	January 10	January 11 - 24
Part II (PAM/TMOD)	April 4	January 31	February 1 - 14
Part III (CSE):		January 18	January 19 - February 1
Weekend 1	April 1 - 3		
Weekend 2	April 15 - 17		
Weekend 3	April 30 - May 1		
ACMO	June 3	May 3	No extended registration



200 South College Street, Suite 1920 ♦ Charlotte, NC 28202 ♦ Tel: 704.332.9565
Fax: 704.332.9568 ♦ Email: nbeo@optometry.org ♦ Website: www.optometry.org